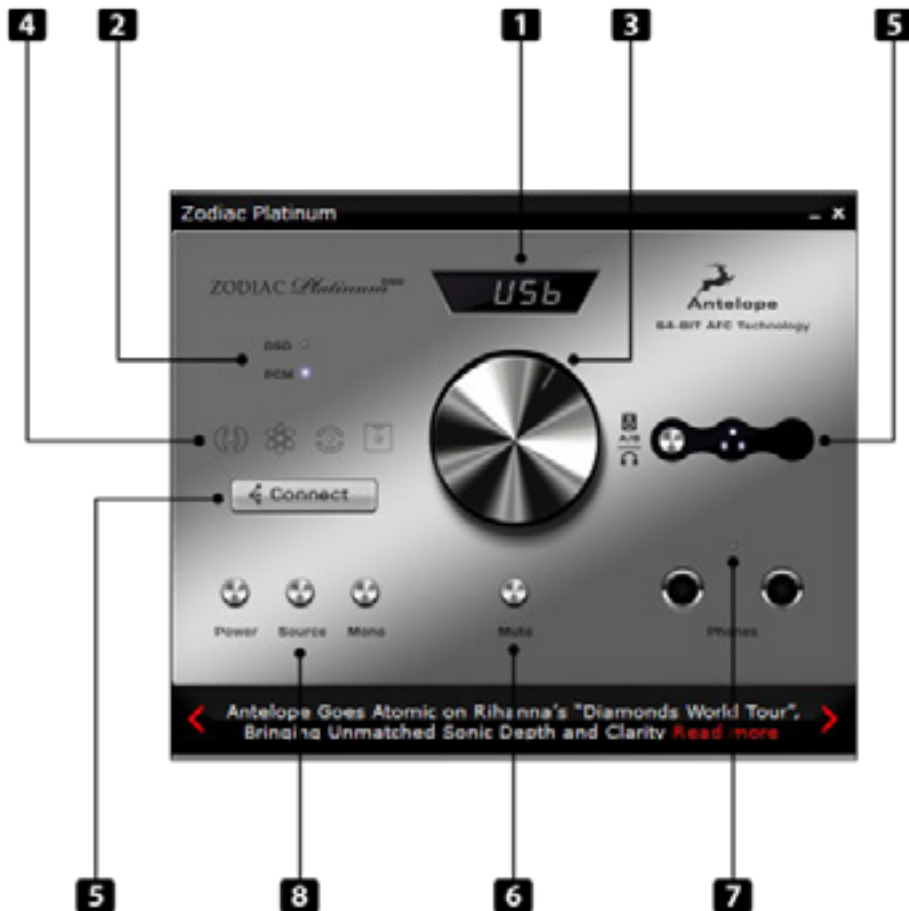
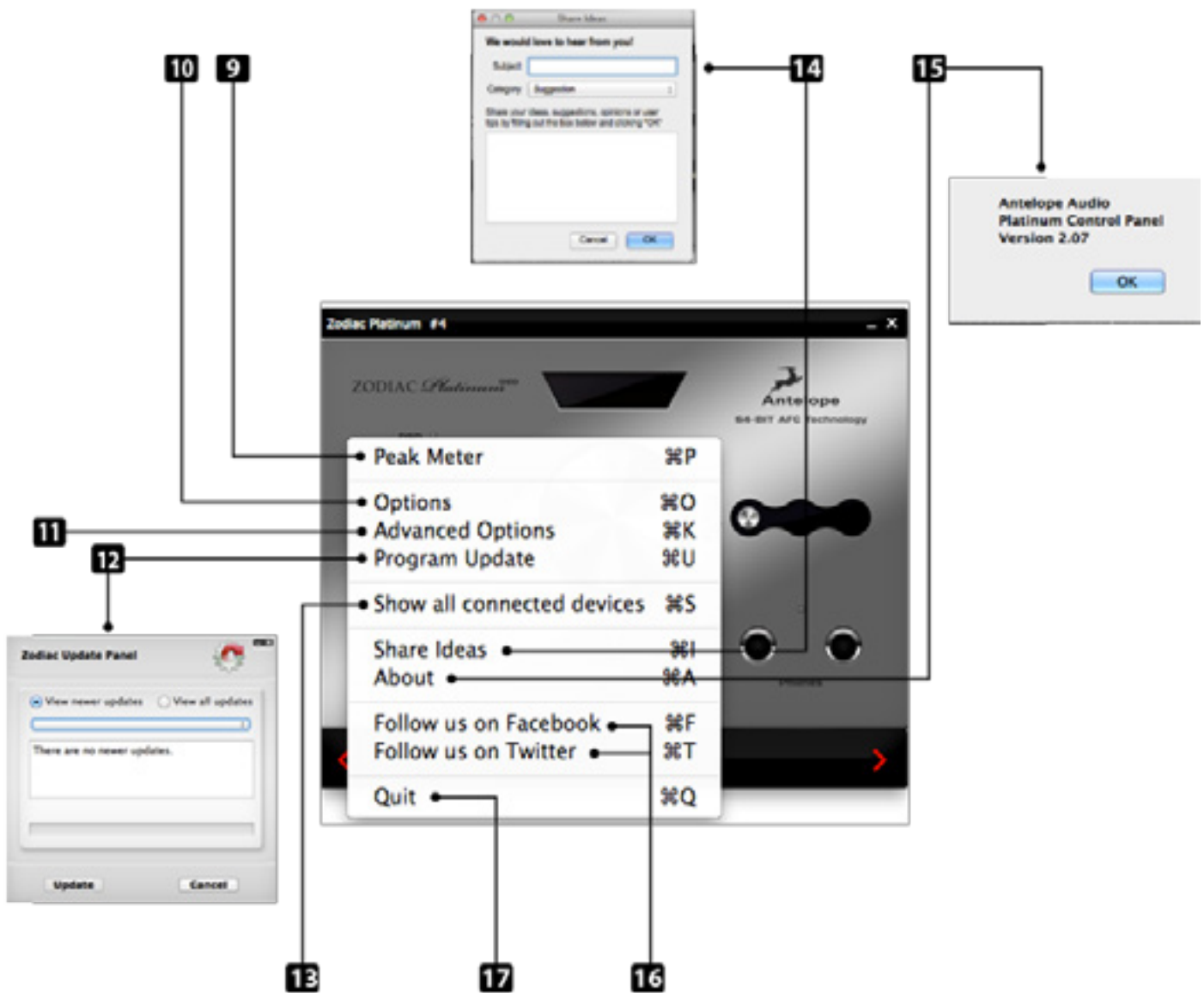


# Zodiac Platinum Software Panel Explained



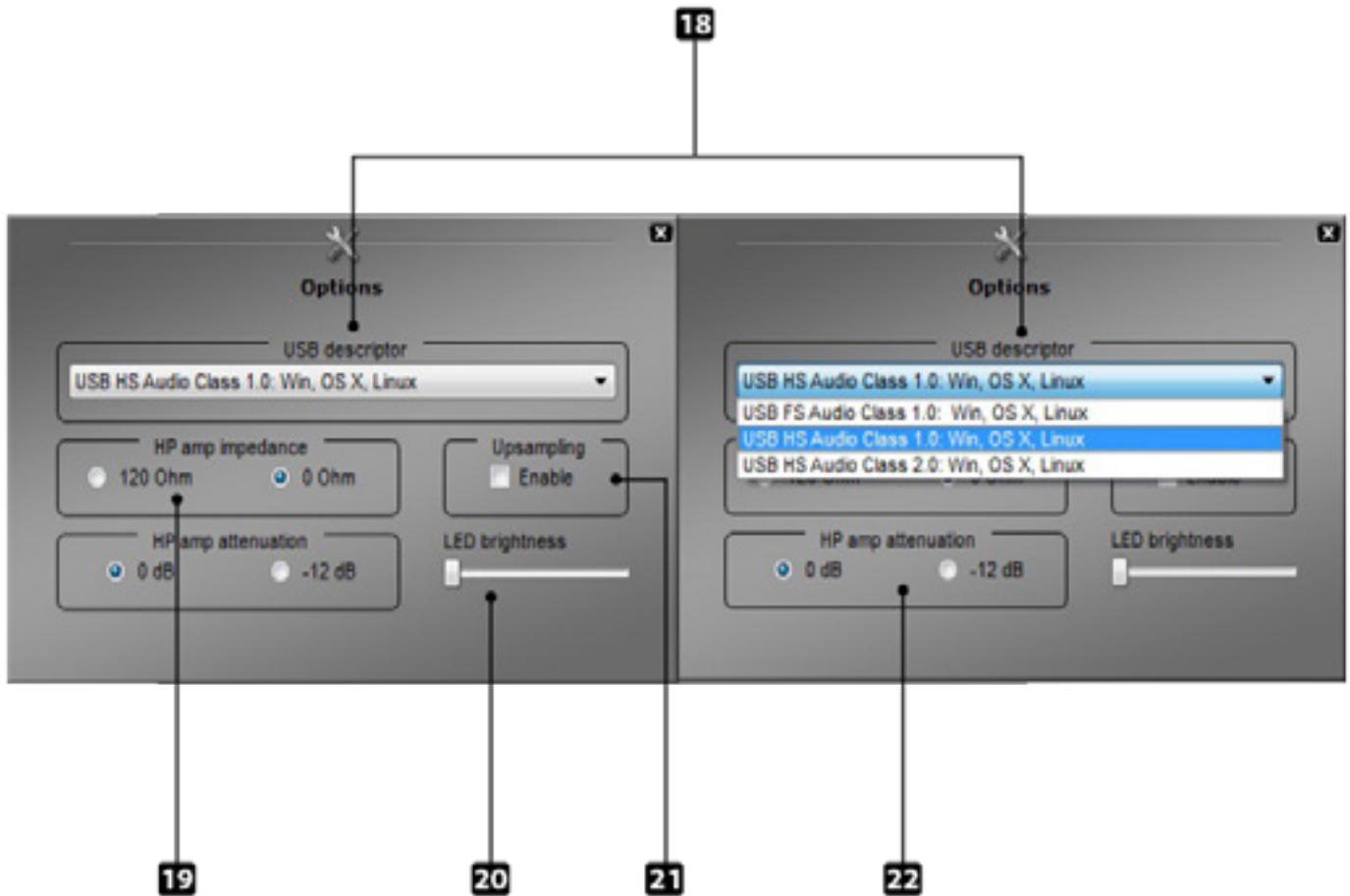
1. Display shows source and sample rate inputted.
2. DSD/PCM light represents whether DSD or PCM is being inputted to the DAC over USB
3. Volume control for controlling headphone and main outs.
- 4. From left to right:**
  - Symbol 1 indicates whether or not the device is receiving lock from a digital input.
  - Symbol 2 represent when receiving an Atomic Clocking reference via Antelopes 10M. NOTE: 10M only references USB audio signals.
  - Symbol 3 represents a word clock signal. NOTE: Word Clock overrides the clock signal present in AES, S/PDIF and TOSLINK.
  - Symbol 4 represents when mono is in effect.
5. Connect allows you to connect to any other Platinum's on the same server with one control panel.
6. Mutes the outputs.
7. When lit Indicates the A/B button has the signal flowing to the headphones.
- 8. From left to right:**
  - The power button allows for putting the device in standby mode.
  - Source button allows you to scroll through all the available inputs and connected devices.
  - Mono button allows you to mono the incoming signal.



## Right Click Options

*By right clicking the control panel you can get various other options available to you.*

9. Clicking the peak meter allows to view it and clicking again lets you hide it.
10. Options allows you to view and change audio class, headphone imp, enable/disable upsampling and brightness
11. Advanced options reveals various trim setting.
12. Program update allows you to update to the latest firmware available and view all past releases.
13. Allows you to view remotely connected devices.
14. Share ideas allows you to share opinions, ideas and features you would like included in next firmware updates.
15. About shows you current control panel version.
16. Connects you directly with our Facebook and Twitter pages.
17. Allows you to quite the application



## Options

*Options can be reached by right clicking the main control panel window and clicking options.*

### 18. USB Descriptor:

- FS 1 - For backwards compatibility and support up to 96khz.
- HS 1 – For sample rates up to 192khz
- HS 2 – For sample rates up to 384khz

19. HP amp impedance for adjusting the impedance between 0 ohms and 120ohms.

20. Adjust the brightness of the panel and on the front display of the unit.

21. Enable/Disable Upsampling for both PCM and DSD

22. HP amp attenuation for adjusting the attenuation between 0dB and -12dB

**All the options on the control panel can be accessed without the need of a computer using some simple shortcuts on the front of the device. The options available are HP impedance represented by a lower case r, HP attenuation represented by its current value in dB, Upsampling can be turned on or off represented by its current state eg. UseF, Audio Class represented by its current status eq. UH 1 and factory reset represented by FrSt. These options can be accessed by following these steps. While the unit is on holding the standby button for 2-3 seconds, using source you can then scroll through the options available by clicking. Once the option has been found clicking and holding the source button will allow you to adjust its state. Once selected you can then scroll through the various states by clicking the source button, once the state has been found holding the source button will select. Clicking the standby button will return you to streaming mode.**

## Advanced Options

*Advanced options can be reached by right clicking the main control panel window and clicking options.*

23. Balanced input trim in dBu ranging from 26dBu to 14dBu

24. Unbalanced input trim in dBV ranging from 12dBV to 0dBV

25. Unbalanced output trim in dBV ranging from 12dBV to 0dBV

26. Balanced output trim in dBu ranging from 26dBu to 14dBu

27. Peak meter can be accessed by right clicking the control panel and clicking peak meter.

